



Three Steps to Readiness

The goal of REM4ed™ is to simplify the creation and implementation of custom Emergency Readiness Plans for schools. We work with districts to insure that comprehensive crisis planning is implemented based on the most recent Department of Education and Department of Homeland Security guidelines.

REM4ed™ takes a very structured approach to the creation and implementation of emergency readiness plans for school districts. We know that the three key areas to implementing a complete readiness program for your district are Crisis Awareness, Plan Creation, and Plan Maintenance. We work with district and school level Crisis Teams to develop, implement, and maintain Emergency Readiness Plans.

Throughout the process, we provide technology tools to help teams create a custom-tailored plan that can be implemented easily and revised as needed. Our web-based tools provide extensive knowledge bases that assist with the development of your plan and then help with every facet of maintaining the plan.



1. Create Awareness

Our first step in working with a district is to conduct an initial training for Readiness and Emergency Management Awareness. This is conducted as a half-day training with the goal of educating key district administrators on the fundamentals of the National Incident Management System (NIMS). The objective is to communicate the need for proper planning and outline the steps required to create, implement, and maintain a Crisis Plan.

The foundation of any crisis plan is the Crisis Team. During this first training, we will discuss the need for implementing an Incident Command System (ICS) team. The overview training will involve key district and school staff expected to be involved in the planning process. This typically includes key district personnel associated with safety and school personnel such as Principals and Assistant Principals.

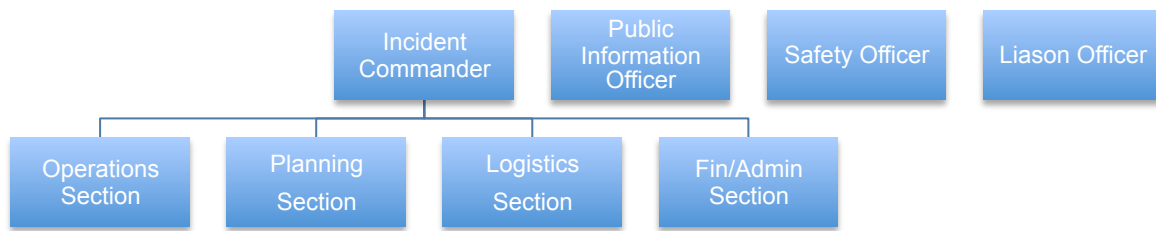
Trainees will be exposed to the school crises that are happening in our world daily – emergencies that occur on school grounds but also those incidents that happen on the ride to school, during field trips, and in numerous other situations that demand preparedness. By the end of the Awareness



Training, key staff will be prepared to assemble crisis teams and begin using the Online Command™ System to create the plan.

2. Create Plans

Crisis teams are engaged by the planning tool to create comprehensive crisis plans either from scratch or by enhancing existing plans. Through a process that involves an all-hazards approach to the four phases, the finished product is a new or improved plan that incorporates the Incident Command System (ICS) and helps districts comply with the Department of Homeland Security's National Incident Management Systems (NIMS) guidelines.



The district and individual schools will use the REM4ed™ tools and knowledge base to create custom crisis plans. The plan will allow users to select from the knowledge base the hazards they deem most appropriate for their contexts. For each hazard, they will select associated activities by phase – Prevention/Mitigation, response, and Recovery – and assign individuals to each activity. Every item – hazard, activity, assignment – is fully customizable. Each school can choose or add items depending upon its unique needs.

Online Command™

The REM4ed Online Command™ program is the heart of our system. It is a web-based planning and tracking tool that enables school districts to create and maintain all aspects of their emergency management plans. In addition to storing roles and activities by phase, the tool also stores critical information such as inventory, training schedules, personnel certifications, maps, and floor plans.

Mobile Command

The REM4ed Mobile Command™ is an innovative software program that allows school administrators to carry assigned response activities by role on a smart phone such as an iPhone™, Blackberry™ or Windows Mobile™ phone.



3. Maintain Plans

Once plans are in place, they are safely stored in our Online Command™ program and easily accessed at any time by school crisis teams, district administrators, first responders, partners, or anyone who would need access to the schools' Crisis Plans. Having this information easily accessible offers significantly improved coordination and communication among education, local government, law enforcement, fire, and other first responders.

In addition, the Online Command™ program tracks personnel training and drills. This enables school administrators to keep appropriate personnel trained and to keep everyone practiced and prepared for any possible emergency.

Safety Audits

A fundamental component of Plan Maintenance is the Safety or Vulnerability Audit. School safety is the responsibility of everyone involved with the district -- staff, students, parents, and the community. A safety audit is a tool that provides a snapshot of the school's level of safety and identifies those areas that need improvement. This prevention/mitigation activity will help ensure that students can maximize their learning potential in a safe and secure environment.

School safety encompasses multiple domains within the school environment. A well-trained staff can learn to prevent some hazards, but also to respond effectively when incidents do occur. Training is paramount for saving lives and minimizing loss. REM4ed™ provides a range of training topics for every staff function.

In sum, REM4ed™ is *the* crisis management tool schools have sought for years. Not all crisis software was designed *specifically for schools*. Let us show you the difference.